

# Technical Data Sheet

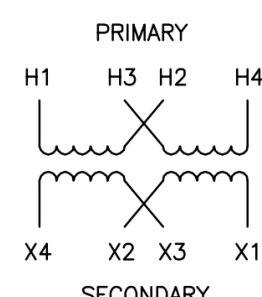


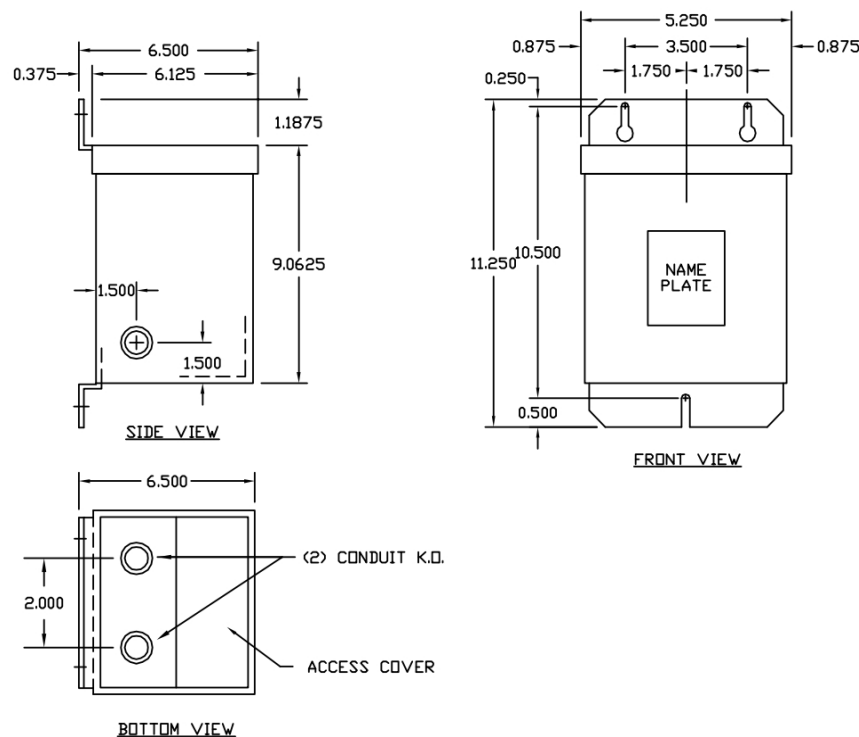
## Catalog No. K2XGF24-1

Characteristics	
Phase	1
KVA	1
Primary	240X480V
Secondary	24/48V
Conductor	Copper
Temp. Rise	115° C
Frequency	60 HZ
Taps	None
ESS	No
Insulation	180° C
Weathershield	N/A
Wall Bracket	Built-In
Weight(lbs)	28
Sound(dB)	40

Notes	
All units are UL listed and are designed in accordance with applicable NEMA, ANSI and IEEE standards.	
Transformers are dry-type AA, non-ventilated NEMA 3R enclosure.	
Transformers are wall mounted. Wall mounting bracket is built into the enclosure.	
Paint color is ANSI 61.	

AMP Ratings	
Line In (Load) @ 240V	4.2A
Line In (Load) @ 480V	2.1A
Load (Secondary) @ 24V	41.7A
Load (Secondary) @ 48V	20.8A

Winding Diagram - 10C		
		
VOLTS	CONNECTIONS	LINE LEADS
240	H2-H3	H1, H4
120	H1-H3, H2-H4	H1, H4
48	X2 - X3	X1, X4
24	X1-X3, X2-X4	X1, X4
When used as an isolation transformer		



Outline No: 05A1463